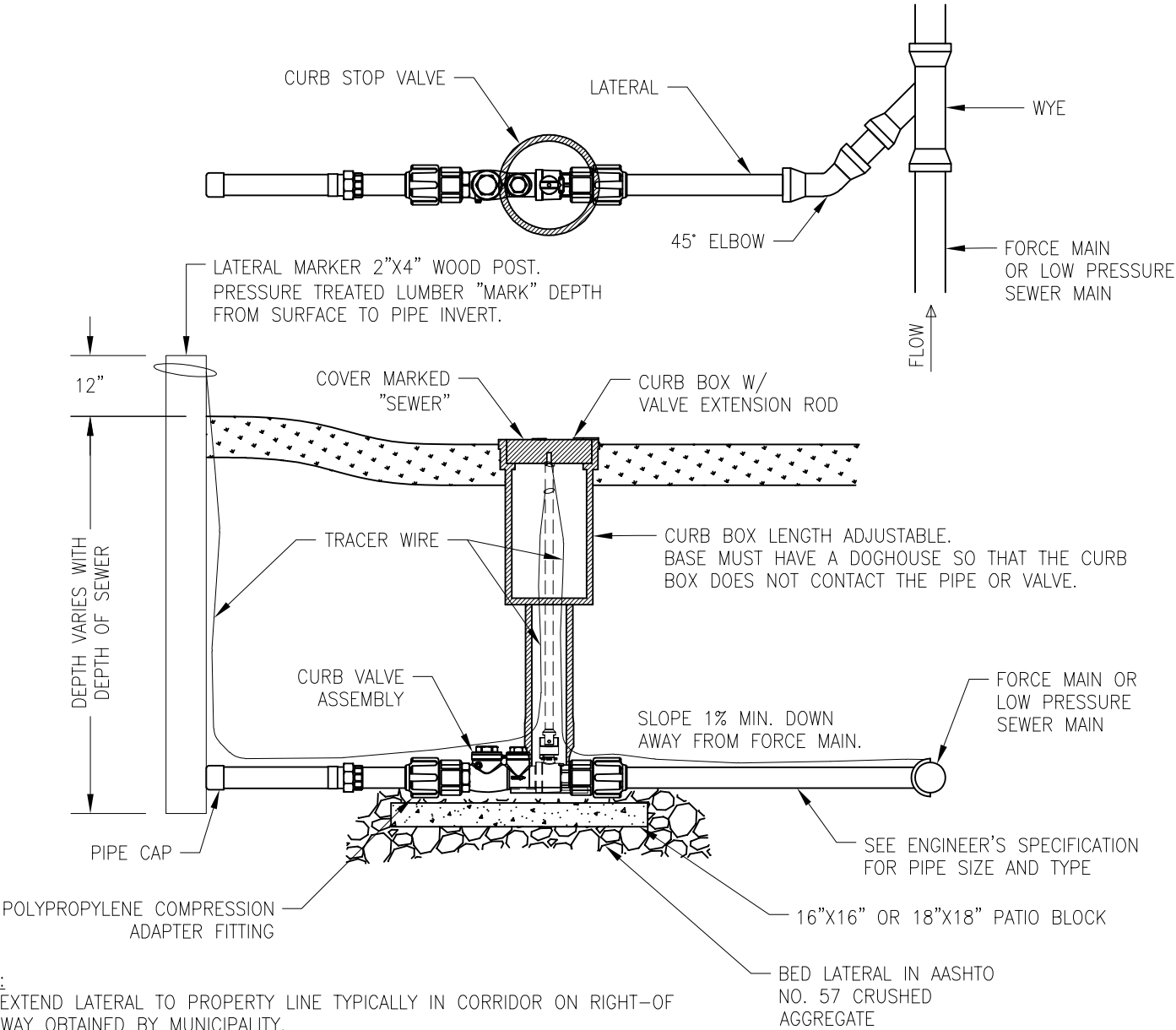


DRAWING REVISIONS				
LTR	BY	DATE	ECO #	DESCRIPTION
△	JRS	11/14/24	RELEASE	

NOTES:  
WYES, BENDS, CAPS AND OTHER FITTINGS  
AS WELL AS PRESSURE SWERE LATERAL  
PIPING, SHALL BE POSITIVELY RESTRAINED  
TO WITHSTAND 150 P.S.I. PRESSURE.



- NOTES:
1. EXTEND LATERAL TO PROPERTY LINE TYPICALLY IN CORRIDOR ON RIGHT-OF WAY OBTAINED BY MUNICIPALITY.
  2. CONTACT PROPERTY OWNER AHEAD OF LAYING PRESSURE SEWER TO DETERMINE THE MOST CONVIENT LOCATION OF CONNECTION AND LATERAL LINE.

DRAWING DESCRIPTION: TYPICAL INSTALLATION RES. SERVICE CONNECTION ZEP LPS		NUMBERS ENCLOSED IN A CIRCLE; ①, ARE CRITICAL TO QUALITY (CTQ) ITEMS. THIS INDICATES A CRUCIAL SPECIFICATION THAT MUST BE ROUTINELY VERIFIED.		<div><div>ZOELLER®</div><div>PUMP COMPANY</div></div>		
		© COPYRIGHT, 2024 : ALL RIGHTS RESERVED BY ZOELLER.				
		TOLERANCES:		CHECKED: <i>Jeremy Conder 12/23/24</i>	ELECTRONIC SCALE: ~ DO NOT SCALE PRINT	
.X ±~ .XX ±~ .XXX ±~		EXCEPT AS NOTED DIMENSIONS ARE IN INCHES.			DRAWING NUMBER: <b>SK3458</b>	
.XXXX±~ ANGLES ±~ FRACTIONS ±~		SHEET: 1 OF 1				
DRAFTER: J.SAGE	DATE: 11/14/24	APPROVED: <i>Jonathan P Stuecker 12/23/2024</i>				